

User Manual

HD-CELU2 DriveStation FlexNet



The DriveStation FlexNet is a flexible, easy to use hard drive. It can work as either a standard external USB hard drive, or as a network attached storage device, accessible to many computers at once. This user manual is intended to assist you in configuring it.

Because we're constantly updating our products, the images and text in this manual may vary slightly from the images and text displayed by your DriveStation FlexNet. These changes are minor and should not affect the ease of setup adversely. As time passes, future user interfaces, updated software, and later versions of this manual may be freely available for download at our web site *www.buffalotech.com*.

For best results, attach the DriveStation FlexNet to an uninterruptable power supply (UPS). Back up all your stored files regularly.

Package Contents: DriveStation USB/LAN Hard Drive
USB Cable
Ethernet Cable
Power Adaptor
DriveNavigator CD
Quick Setup Guide
Warranty Statement

Front Panel Layout	4
Back Panel Layout	5
Installation	6
LAN Mode	8
USB Mode.....	9
Web Admin Tool.....	10
Network Settings.....	13
Sleep Mode	14
Disk Management.....	15
Security.....	16
Maintenance.....	17
Notes	19
Technical Specifications.....	20
Contact Information (USA)	21
Contact Information (Europe)	22



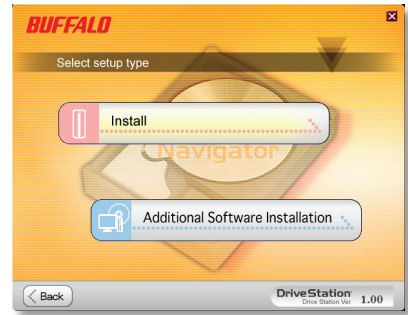
Note: The DriveStation FlexNet can be connected to a computer as both an Ethernet NAS and a USB external hard drive at the same time. To switch between the two modes, hold down the mode button for a few seconds and then release it.





Insert the installation CD into your PC's CD-ROM drive. Setup will automatically launch. Click on *Begin Installation* button.

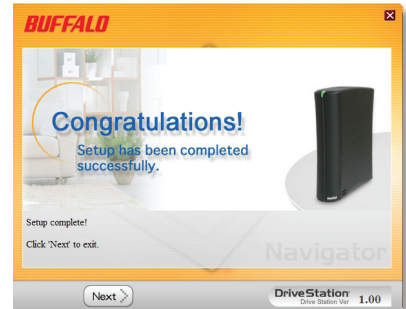
Click *Install*.





The wizard will guide you through installation. First, you'll install the DriveStation FlexNet as a USB device. Then, you'll switch modes and install the DriveStation FlexNet in LAN mode as a NAS device. Follow the directions on each screen and continue pressing *Next* to step through the installation.

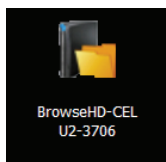
When installation is complete, you may close the installation window.



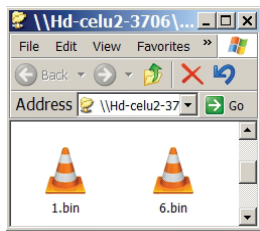
Using your DriveStation FlexNet in LAN Mode



In LAN mode, the mode button will glow green. If it's red, hold it in for a few seconds, and then release it. The LED will change to green.



After running the installation wizard, this icon will be on your desktop: *BrowseHD-CEL*.

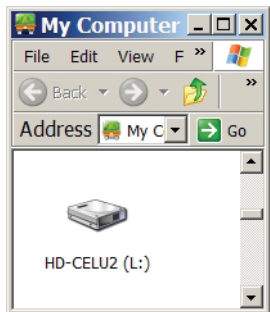


In LAN mode, clicking *BrowseHD-CEL* takes you directly to the main folder on your DriveStation FlexNet.

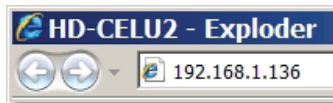
Using your DriveStation FlexNet in USB Mode



In USB mode, the mode button will glow red. If it's green, hold it in for a few seconds, and then release it. The LED will change to red.



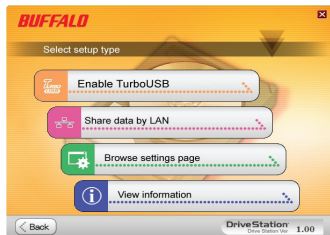
In USB mode, the DriveStation functions as a normal external USB hard drive. It can be accessed from My Computer. By default, it will receive the next available drive letter and will be named *HD-CELU2*.



The Web Admin tool may be accessed by typing the IP address of your DriveStation FlexNet into the URL bar of a browser running on a computer connected to the same network as the DriveStation FlexNet.



Or, from your DriveNavigator CD, click *Options*.



Choose *Browse settings page* to open the Web Admin tool.

Welcome to your DriveStation's Web Admin tool! Bookmark this page in your browser so it can be easily accessed for future configuration changes. If the DriveStation FlexNet's IP Address changes, you will need to recreate the link. You can also get here by typing `http://DriveStation_Name` into a Web browser, where `DriveStation_Name` is the name (hostname) of your DriveStation FlexNet.

You are now at the *Home* screen. You can navigate this menu by clicking on the links at the left of the screen. Here at "Home", you can see basic information about your DriveStation's current configuration. To exit Web Admin, close the browser window.

Host Name	HD-CELU2-3706
Model Name	HD-CELU2
IP Address	192.168.1.136
Current Date and time	2008/08/27 09:07:42 GMT-6
HDD Space Used	9.06 GB / 232.88 GB (3.89%)
HD Mode	Ethernet

You may modify your DriveStation FlexNet's hostname in the *Hostname* window. A friendly, easy-to-remember name (e.g. "DriveStation") is recommended.

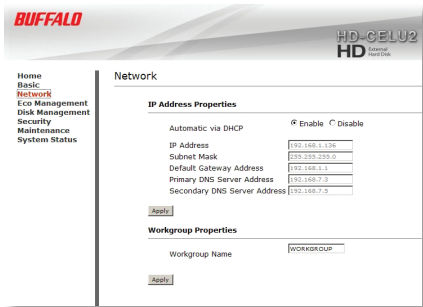
Make sure that the date and time are correct in *Date and Time Setup*. To synchronize time settings with those in your computer, press *Use Local Time*. To have your system time automatically set by an NTP server, enable *NTP Server* and enter an IP Address for an NTP server (e.g. 192.43.244.18) or click on the box below to use the supplied default NTP server.

Ensure that the *Display Language* is set to a language that you're comfortable with.

Click *Apply* to save your settings.

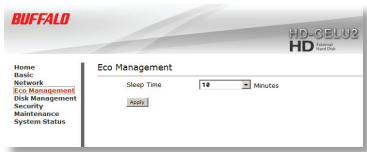
The screenshot shows the 'Basic' configuration window for a Buffalo HD-CEL2U2 device. The window is divided into several sections, each with an 'Apply' button:

- Host Name:** A text field contains 'HD-CEL2U2-3704'.
- Date and Time Setup:** Includes fields for Date (Year, Month, Day) and Time (Hours, Mins, Secs). A 'Use Local Time' button is present. The Time Zone is set to 'GMT -06:00'.
- NTP Settings:** The 'NTP Server' option is selected (radio button). The 'NTP Server Address' is '192.43.244.18'. The 'NTP Synchronization Frequency' is 'Once a day'.
- Text Display Settings:** The 'Display Language' is set to 'English'.



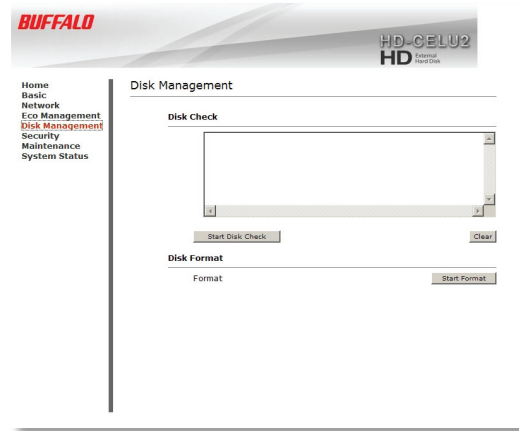
In most networks, DriveStation will get its IP Address automatically from a DHCP server. You may disable DHCP here if you would rather set a static IP address manually. If DHCP is disabled and an IP Address is not set manually, it will default to *192.168.11.150* with subnet mask *255.255.255.0*. In that case, change your PC's IP address to *192.168.11.xxx* and subnet mask to *255.255.255.0* to access the DriveStation or use the DriveNavigator Wizard. The DriveStation FlexNet's *IP Address*, *Subnet Mask*, *Default Gateway Address*, and *DNS Server address* may all be entered manually under *IP Address Properties*.

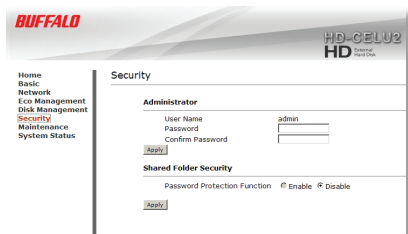
Click *Apply* after making any changes.



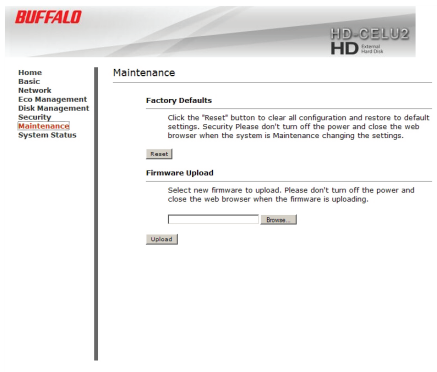
To save power, the DriveStation can be set to go into sleep mode after 10 - 60 minutes of inactivity. The sleep mode setting only works when the DriveStation is connected via LAN. To use sleep mode while the DriveStation is in USB mode, install the eco manager tool, located in the Tool/eco folder of your CD.

Here, you may initiate a disk check that scans your DriveStation's hard drive for errors. Also, you may reformat the hard drive from here. Reformatting the drive erases all data from the drive, so make sure that your backups are up to date before reformatting the drive.





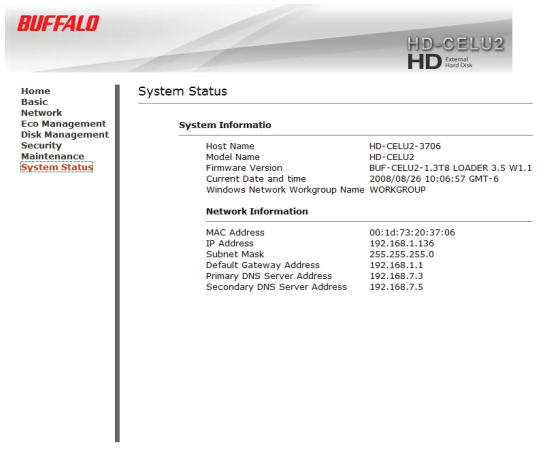
To enable password protection on the admin account, enter a password twice and click apply. Once the admin account is password protected, you may password protect your shared folder as well.



Reset restores all settings to their factory defaults. Your data isn't affected.

Check www.buffalotech.com for updated firmware files. To update the firmware, browse to the updated firmware file and click *Upload*.

You may also reset the DriveStation's settings to factory defaults by holding down the reset button on the back of the unit during startup. Hold down reset, turn the unit on, and continue to hold down the reset button for 30 seconds. The DriveStation will boot with all factory defaults restored.



BUFFALO HD-CELU2
External Hard Drive

[Home](#)
[Basic](#)
[Network](#)
[Eco Management](#)
[Disk Management](#)
[Security](#)
[Maintenance](#)
[System Status](#)

System Status

System Information

Host Name	HD-CELU2-3706
Model Name	HD-CELU2
Firmware Version	BUF-CELU2-1.3T8 LOADER 3.5 W1.1
Current Date and time	2008/08/26 10:06:57 GMT-6
Windows Network Workgroup Name	WORKGROUP

Network Information

MAC Address	00:14:73:20:37:06
IP Address	192.168.1.136
Subnet Mask	255.255.255.0
Default Gateway Address	192.168.1.1
Primary DNS Server Address	192.168.7.3
Secondary DNS Server Address	192.168.7.5

This page shows you the System Information for your DriveStation FlexNet.

With a LAN connection, the maximum file size is 127 GB. Files larger than 4 GB will not be accessible from the USB interface.

If no DHCP server is available, the IP address of the device will default to 192.168.11.150. In that case, change your PC's IP address to 192.168.11.xxx to access the DriveStation or use the DriveNavigator Wizard.

When in LAN mode, up to 8 clients can access the drive at the same time.

Do not switch between USB and LAN modes during file access. A blinking Power/Access LED can indicate file access.

With a USB connection, the maximum file size is 4 GB.

If your PC can not reboot properly after installing the software package, uninstall the sleep mode control software to resolve.

Before changing from USB mode to LAN mode, use the 'Safely Remove Hardware' wizard to disconnect the USB connection properly.

The SecureLockMobile utility is stored in the shared folder of the drive. It's also on the CD at \Tool\SLM\slm.exe. SecureLockMobile works with both USB and Ethernet connections.

The power save utility on the CD is for USB connection only. Use the power save settings in the web admin to set power settings in LAN mode.

Up to 10 HD-CELU2 units may be set up on the same network.

Transmission Speed:	10/100 Mbps (Ethernet); 480 Mbps (USB)
Hard Drives:	3.5" SATA
Ethernet Connector:	RJ-45
USB Connector:	USB 2.0
Power Supply:	100-240V 50/60Hz
Client OS Support:	Windows [®] 2000, XP, Vista™
Power Consumption:	Max 24W, Average 17W
Dimensions:	6.1" x 6.9" x 1.8" (156 x 174 x 45 mm)
Weight:	35 ounces (1 kg)
Operating Environment:	41°- 95° F, 5°- 35° C; 20 - 80% non-condensing

Buffalo Technology USA Inc.
11100 Metric Blvd., Suite 750
Austin, TX 78758

GENERAL INQUIRIES

Monday through Friday
8:30am-5:30pm CST

Direct: 512-794-8533 | **Toll-free:** 800-456-9799 | **Fax:** 512-794-8520 | **Email:** sales@buffalotech.com

TECHNICAL SUPPORT

North American Technical Support by phone is available 24 hours a day, 7 days a week. (USA and Canada).

Toll-free: (866) 752-6210 | **Email:** info@buffalotech.com

Buffalo Technology UK Ltd.
2 Bracknell Beeches, Old Bracknell Lane
Bracknell, Berkshire, RG12 7BW
United Kingdom

GENERAL INQUIRIES

Email: *sales@buffalo-technology.com*

TECHNICAL SUPPORT

Buffalo Technology provides technical support in English, German, French, Italian and Spanish. For opening hours and relevant telephone numbers, please go to:

www.buffalo-technology.com/contact